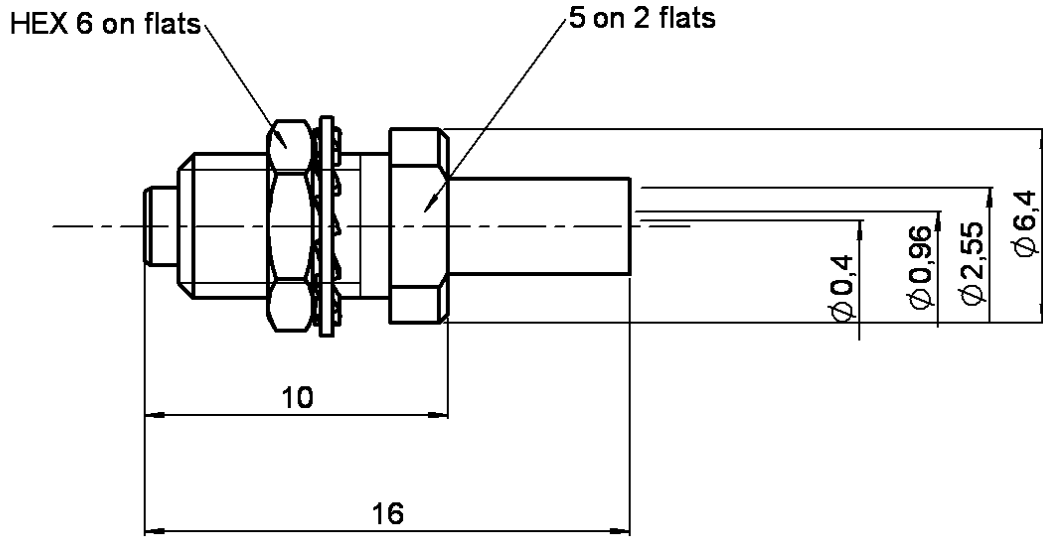


**STRAIGHT BULKEAD CRIMP TYPE**  
**ON CABLE 2/50**

**R199.005.030**

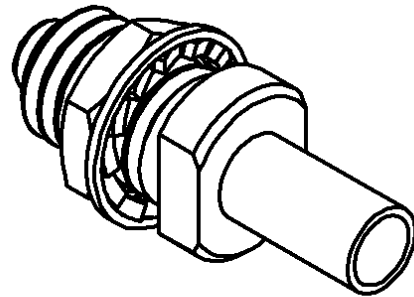
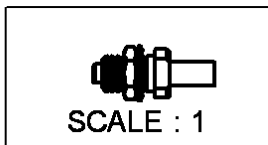
Series : MC-CARD



**PANEL CUT OUT**

A

mm		
	Maxi	mini
A	4.85	4.8



All dimensions are in mm.

COMPONENTS	MATERIALS	PLATINGS (µm)
BODY	BRASS	NICKEL 2
CENTER CONTACT	CuBe2	GOLD 1.3 OVER NICKEL 2
OUTER CONTACT	-	-
INSULATOR	PTFE	-
GASKET	-	-
OTHERS PARTS	BRASS	NICKEL .
-	-	-
-	-	-

Issue : 0102 D

In the effort to improve our products, we reserve the right to make changes judged to be necessary.



**STRAIGHT BULKEAD CRIMP TYPE**

**R199.005.030**

**ON CABLE 2/50**

Series : **MC-CARD**

**PACKAGING**

**SPECIFICATION**

Standard	Unit	Other
<b>100</b>	<b>'W' option</b>	<b>Contact us</b>

**ELECTRICAL CHARACTERISTICS**

**ENVIRONMENTAL**

Impedance		<b>50</b> Ω
Frequency		<b>0-8</b> GHz
VSWR	<b>1.15</b> +	<b>0.015</b> x F(GHz) Maxi
Insertion loss		<b>.07</b> √F(GHz) dB Maxi
RF leakage	- (	<b>65</b> - F(GHz)) dB Maxi
Voltage rating		<b>170</b> Veff Maxi
Dielectric withstanding voltage		<b>500</b> Veff mini
Insulation resistance		<b>5000</b> MΩ mini

Operating temperature	<b>-65/+165</b> ° C
Hermetic seal	<b>NA</b> Atm.cm3/s
Panel leakage	<b>NA</b>

**OTHERS CHARACTERISTICS**

Assembly instruction **Crimp 01**

Others :  
-

**MECHANICAL CHARACTERISTICS**

Center contact retention		
Axial force – Mating end	<b>NA</b>	N mini
Axial force – Opposite end	<b>NA</b>	N mini
Torque	<b>NA</b>	N.cm mini
Recommended torque		
Mating	<b>NA</b>	N.cm
Panel nut	<b>60</b>	N.cm
Mating life	<b>0</b>	Cycles mini
Weight	<b>1.842</b>	g

Issue : 0102 D

In the effort to improve our products, we reserve the right to make changes judged to be necessary.

